



LX2000

X射线在线检测装备 In-line X-ray Detection Equipment

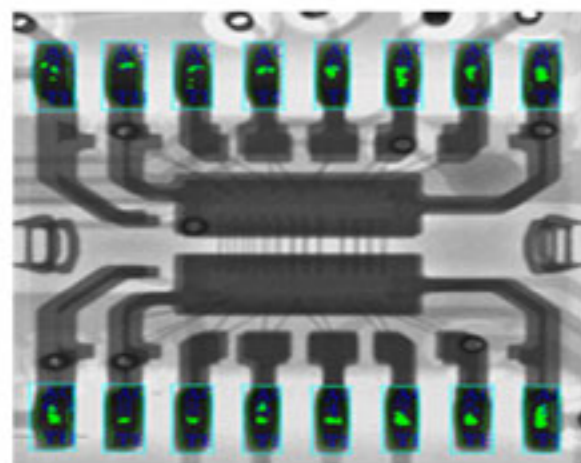
应用领域

- LED、SMT、BGA、CSP、倒装芯片检测
- 半导体、封装元器件、电池行业
- 电子元器件、汽车零部件、光伏行业
- 铝压铸模铸件、模压塑料
- 陶瓷制品等特殊行业的检测

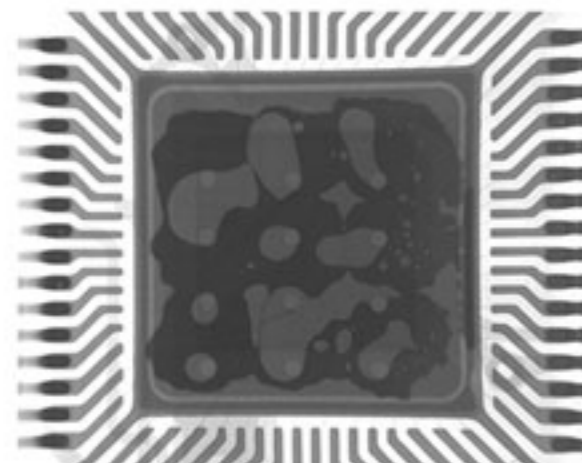
Applications

- LED, SMT, BGA, CSP, Flip Chip Inspection.
- Semiconductor, Packaging components, Battery Industry.
- Electronic components, Auto parts, Photovoltaic Industry.
- Aluminum Die Casting, Moulding Plastic.
- Ceramics, Other Special Industries.

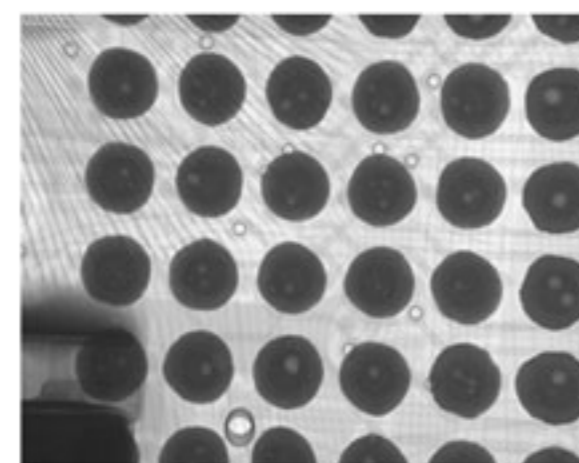
检测图片 Inspection Images



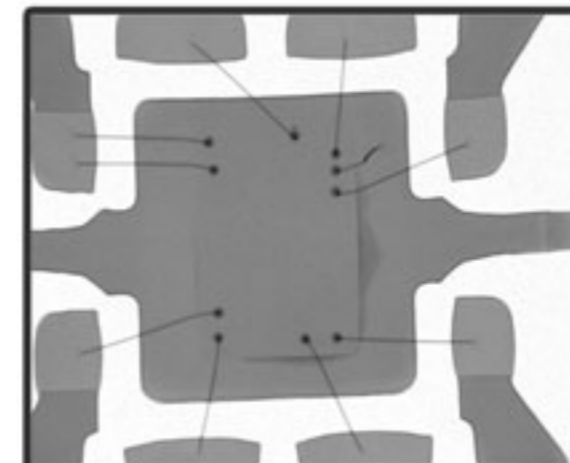
IC test



Inspection for Voids



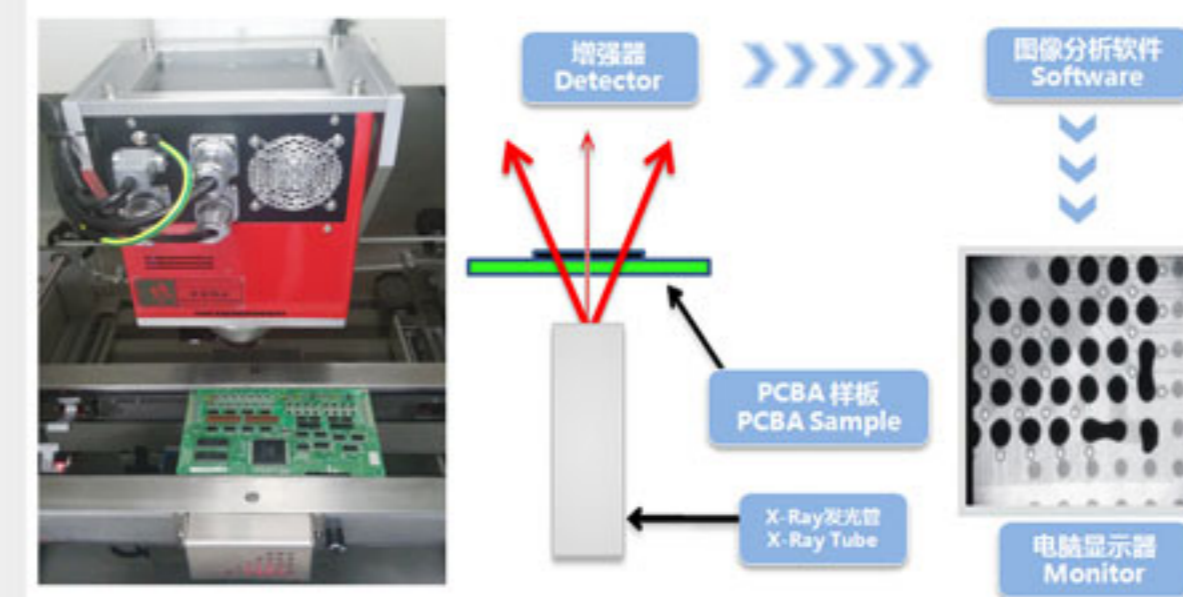
BGA Inspection



IC Chip Image

X射线智能检测装备领航者
A Leader in the Intelligent X-ray Detection Equipment

产品特点 Features



LX2000是日联科技为满足客户对X射线检测的需求，推出的一款外形美观、检测区域大、分辨率强、放大倍率高的全新在线式X-Ray检测系统。该系统采用封闭式射线源和平板探测器作为核心部件，具备绝佳的检测效果。适用于半导体、封装元器件、电子连接器模组检测、光伏行业等特殊行业的检测。

The LX2000 X-ray inspection machine release is a beautiful appearance, large detection area, high resolution, high magnification of the new in-line X-Ray inspection system with our Unicom Technology R&D Manufacturing Division. The excellent detection results with the system uses a closed source and flat panel detectors as the core components. It's widely applied in semiconductor, Flip Chip, electronic connector module testing, photovoltaic industry and other special industries.

设备参数 Specifications

项目 Item	名称 Definition	参数 Specs
整机状态 System Parameters	尺寸 Size	1385(L)×1400(W)×1620(H) mm
	重量 Weight	2000 kg
	电源电压 Power	220AC/50Hz
	功率 Power Consumption	3.5 kW
X射线光管 X-ray Tube	射线管种类 Type	封闭型 Closed
	最大电压 Max.Voltage	130 kV
	最大输出功率 Max.Power	40 W
	焦点尺寸 Spot Size	3 μm
X射线系统 X-ray System	成像器 Intensifier	平板探测器 FPD
	显示器 Monitor	22寸显示器 22" LCD
	系统放大倍率 System Magnification	200×
检测区域 Detection Region	轨道调节范围 Orbit Adjusting Range	80-350mm
	安全性(辐射量) X-ray Leakage	< 1μSv/h
	控制方式 Control Mode	CNC运动模式 CNC Motion Mode

• 本资料记载截止2017年4月的内容，规格可能因产品改良等而变更，恕不另行通知。 Rev 1.0 LOT NO : 20170401

全国销售热线
400 880 1456



微信名称：日联科技
欢迎关注日联科技官方微信，
及时了解产品、技术最新动态！

无锡日联科技股份有限公司

地址：无锡新区鸿山街道锡协路208号机电工业园
Address : No.7 Bldg, Mechanical and Photoelectronics Industrial Park, No.208 Xixie Road, Hongshan Street, New District, Wuxi, P.R.C.
Tel : +86-510-81816006 Fax : +86-510-81816016

深圳市日联科技有限公司

地址：深圳市光明新区新田路9号日联科技工业园A栋
Address : B&K Technology Park, No. 9, Bangkai Road, Guangming New district, Shenzhen, P.R.C.
Tel : +86-755-26650316 Fax : +86-755-26650296

无锡日联科技软件技术有限公司

地址：无锡新区泰山路2号国际合作园C楼
Address : Block C, International Science and Technology Cooperation Park, Taishan Road, New District, Wuxi, P.R.C.
Tel : +86-510-81816020 Fax : +86-510-81816016

重庆日联科技有限公司

地址：重庆市北碚区同兴南路71号银钢工业园
Address : Yinggang Industry Park, NO.71, Tongxing South Road, Beibei District, Chongqing, P.R.C.
Tel : +86-23-63226131 Fax : +86-23-63228366